



IMPORTANT PRE-REGISTER INFO

YMCA SUMMER DAY CAMP 2025

LA CROSSE SUMMER DAY CAMP LOCATIONS:

- EMERSON ELEMENTARY
- NORTHSIDE ELEMENTARY
- HARRY SPENCE ELEMENTARY
- LA CROSSE PROGRAM DATES: JUNE 9TH-AUGUST 15TH (6:30AM-6PM)
- BREAKFAST , LUNCH, & AFTERNOON SNACK WILL BE PROVIDED

ONALASKA SUMMER DAY CAMP LOCATIONS

- IRVING PERTZSCH ELEMENTARY
- EAGLE BLUFF ELEMENTARY
- NORTHERN HILLS ELEMENTARY
- ONALASKA PROGRAM DATES: JUNE 9TH-AUGUST 15TH (6:30AM-6PM)
- BREAKFAST , LUNCH, & AFTERNOON SNACK WILL BE PROVIDED

Is your child enrolling in the Onalaska School District Summer School to be held July 7th-25th?

If "yes" and need care: you can only enroll in wrap-around care at Northern Hills for those 3 weeks.

If "no" and need care: you must enroll in care at Irving Pertzsch or Eagle Bluff for those 3 weeks.

HOLMEN SUMMER DAY CAMP LOCATIONS

- PRAIRIE VIEW ELEMENTARY
- SAND LAKE ELEMENTARY
- HOLMEN PROGRAM DATES: JUNE 2ND-AUGUST 22ND (6:15AM-6PM)
- BREAKFAST , LUNCH, & AFTERNOON SNACK WILL BE PROVIDED

Current Family Registration

- Complete emailed registration form link
- Registration Links will be emailed to you on March 11th at 6:00 pm and submitted forms will be processed in the order of receipt.

New Family Registration

- Complete Registration form link
- Registration links will be available via our website on March 18th at 6:00 pm and submitted forms will be processed in the order of receipt.

Weekly Rates:

Full-time: \$200 (allows 4-5 days of weekly attendance)

Part-time: \$165 (allows a max of 3 days of weekly attendance)

Onalaska District Summer School Wrap-Around Care @ Northern Hills: \$93

(Wrap-around care offered at Northern Hills will only be provided to Participants who are attending Onalaska School District Summer School. Care will be offered Monday-Thursday and all day Friday during the weeks of July 7th-25th.)

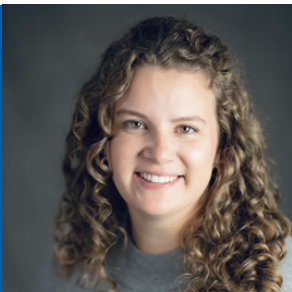
Accessibility:

YMCA Financial Assistance Discounts are available for those who qualify - apply online

We accept WI Shares Subsidy

Cancellation Policy

All cancellation requests must be made by the Monday, two weeks before the cancelled week and must be submitted via email to childcarebilling@laxymca.org. Any cancellation requests not meeting this criteria are required to pay the full cost of care for the week. All weekly care cancellations will be charged a \$10.00 per week cancellation fee at the time of the cancellation.



MADDIE LACOUNT

SENIOR SCHOOL AGE DIRECTOR
MLACOUNT@LAXYMCA.ORG



HOLLY KLEINER

CHILDCARE ACCOUNTS SPECIALIST
CHILDCAREBILLING@LAXYMCA.ORG